

BREAST CANCER AWARENESS

AH-04

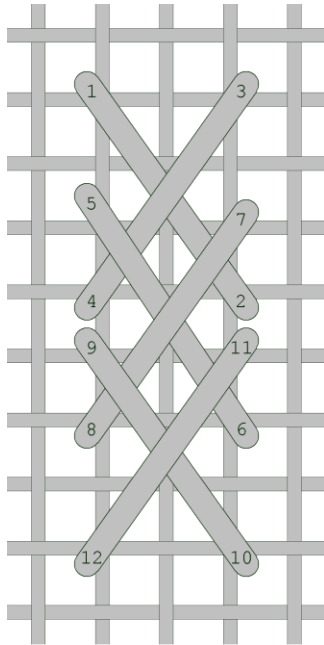


STITCH GUIDE BY
SUZIE VALLERIE

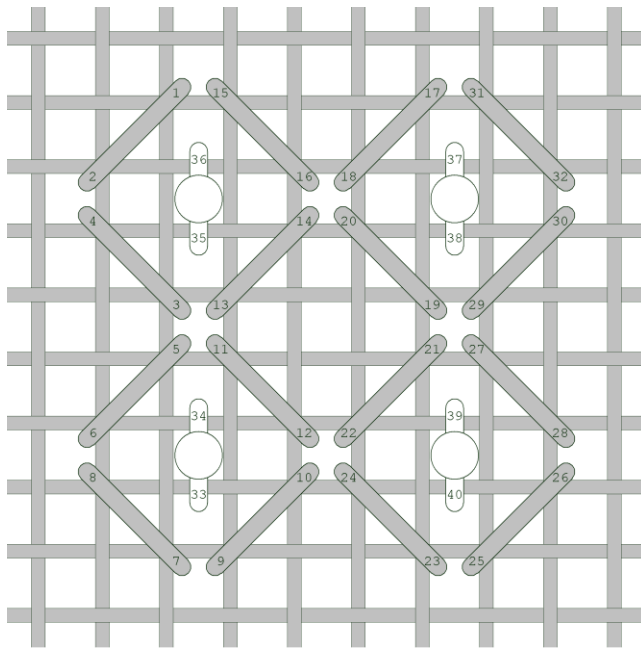
V N G C a n v a s

Skin: Basketweave - 3 strands of Planet Earth 6-Ply Silk Fresh 1225. You can change this to any skin color you like to personalize the piece.

Bra Straps: Van Dyke - Petite Silk Lame Braid SP122



Bra Cups: Alicia's Lace with a bead - SP122, Sundance Bead #299I



Use the Petite Silk Lame Braid as your beading thread

I would stitch over the white bow and make a bow with silk ribbon or Lazy Daisies with a white thread of your choice.

Lace: You can Buttonhole the lace with a white thread of your choice or you can apply a small piece of lace trim tacked on with beading thread or one strand of a floss to match.

There are so many ways to personalize this piece. Have fun with it!

Thread List

Petite Silk Lame Braid SP122

Planet Earth 6-Ply Silk Fresh 1225 or any skin color of your choice

Sundance Size 14 Bead #299I

Lace trim or white thread of your choice