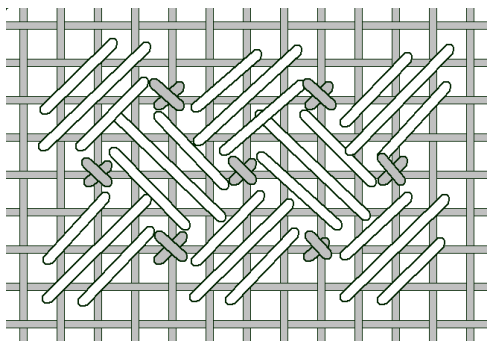


*Autism Heart*  
*SV-H001*

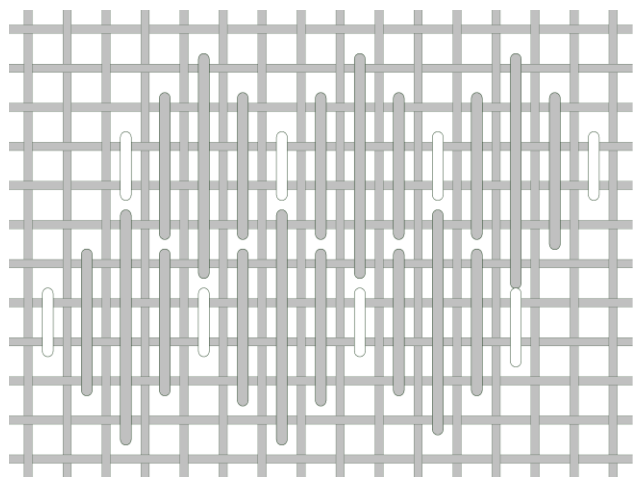


*Stitch Guide by Suzie Vallerie*

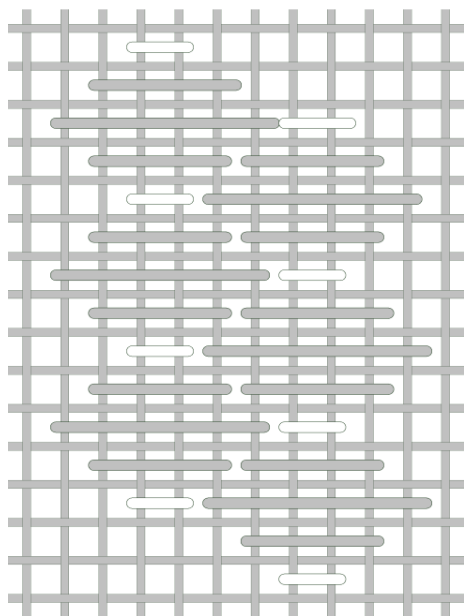
*Yellow and Green: Criss-Cross Hungarian. The Silk Lame Braid is used for the cross stitch.*



*Blue: Use Silk Lame Braid for the white stitch in the diagram.*



*Red: Use Silk Lame for the white stitch in the diagram*



### Thread List

*Pepper Pot: Tomato 016, Jelly Bean 099, Ultramarine 156*

*Silk Lame Braid: SL77, SL79, SL95, SL126*

*Vineyard Silk C-164*